

Daily Nifty Observer

Issue - 670

May 29, 2012

Nifty Outlook

.....only continuation to trade above 4950 levels will increase the probability to breach and sustain above 5000 levels on tuesday.....

Support

4980/4950/4910

Resistance

5020/5050/5070

Market Strength Indicators

14 days RSI - Up by 6.99 points at 47.00 levels

14 days SchRSI - Up by 0.61 points at 100 levels

Stochastic - Up by 23.63 points at 84.3 levels

TSI - Up by 3.83 points

Market Intensity Indicator

NFP - At discount of 10.25 from discount of 1.55 earlier

Advance - 969

Decline - 483

Volatility - Up by 0.01 points at 0.16 levels from previous

Moving Average Indicator

20 days SMA - 4982.31

50 days SMA - 5146.11

200 days SMA - 5070.74

Bollinger Band - Moving towards Middle Band from Below

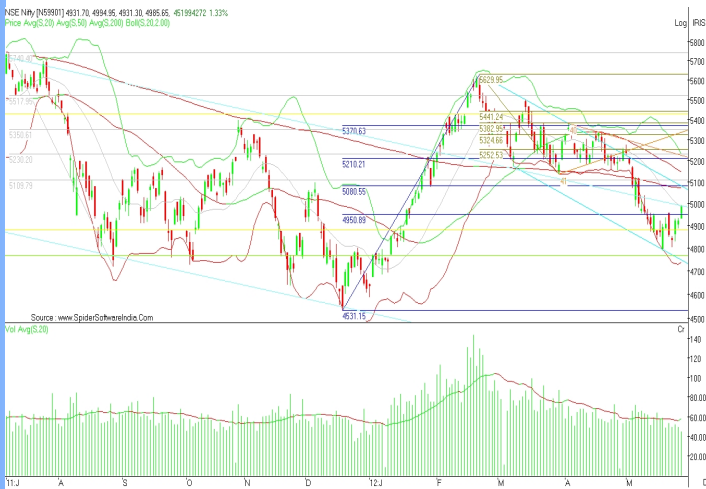
Other Indicators

FII's Spot - Positive

DII's Spot - Positive

F&O - Positive

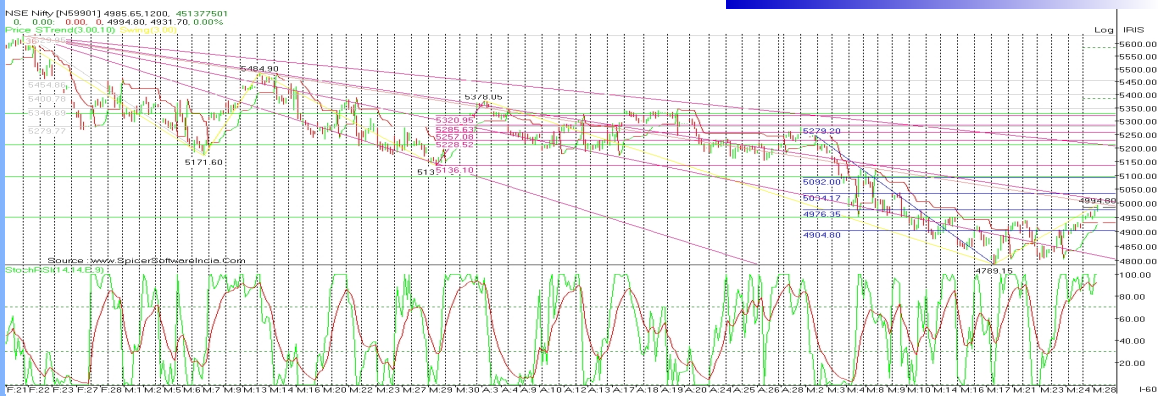
Spot Nifty Daily Chart Analysis



Spot Nifty closed at 4985.65 up 1.33 % after up trending trading session with fall in volume which was below its 20 period SMA. It made a high of 4994.95 and low of 4931.30 levels intraday. Nifty closed above its 20 period, below its 50 periods and even below its 200 periods SMA. SHORT TERM TREND WILL REMAIN BEARISH AS NIFTY CLOSED BELOW ITS 200 DAYS SMA ON MONDAY (07/05/2012). Momentum oscillator is indicating that Nifty is moving towards its over bought zone on intraday chart.

On tuesday Nifty likely to continue trade above 4900 levels with 4880 levels as major support on daily chart. Below 4980 levels Nifty has immediate support at 4950/4910 levels. Above 4980 levels, Nifty may resist to sustain above 5020/5050 levels.

60 Minute Chart Analysis



14 days Schotestic RSI (60 minutes chart) closed at 100 levels & traded across its 9 period EMA for whole of the trading session and managed to close above it. On tuesday it may try to come below its 9 period EMA levels allowing Nifty to trade below 5050 levels.

Today, Nifty moved towards 5000 levels but closed below it. On tuesday only continuity to trade above 4950 levels will increase the probability to breach and sustain above 5000 levels. Below 4950 levels Nifty has important support zone of 4910/4880 levels.

240 Minute Chart Analysis



After 32 day for Nifty in bear zone, today it closed above Super Trend, over 240 minutes Heikin Candle, giving an indication for short term bull run.

Today Nifty sustained and closed above 4950 levels.

Nifty for 3rd day closed above its 2nd speed line and moved towards 3rd speed line on intraday. Speed line is drawn from the high of 5629.95 (22/02/12) and low of 5136.10 (29/03/12).

In next few 240 minute Heikin candle Nifty have to give close above 2nd speed line to move towards 3rd speed line (around 5100 levels). If it continues closing below 3rd speed line then it will increase probability to slide towards 1st speed line (around 4500 levels).

Note on Nifty Intraday Price,OI & Volume (28/05/2012)

On monday rise in Nifty (1.33 %) was registered with fall in Nifty May 12 futures open position (12.99 %) and fall in Nifty spot intraday volume (9.27 %).

Nifty rise with fall in OI and volume suggesting that the market is running out of traders willing to open or hold an open long. Trades are liquidating both losing short position and closing winning long positions. A higher probability the market is set to retrace in price lower at some point forward.

Current rise of 1.33 % in Nifty was due to short covering in Nifty May 12 series.

For tuesday, 4950 levels will act as a strong support levels. Continuation of trading above it will increase the probability to test 5020/5050 levels. Below 4950 levels Nifty has major support zone at 4910/4880 levels.

Stocks Corner

Fresh Long

BOMDYEING	PIRHEALTH	SKUMARSYNF	GMDCLTD	HAVELLS
TITAN	SBIN	TVSMOTOR	SYNDIBANK	BHEL
CUMMINSIND	VIPIND	OFSS	PUNJLLOYD	ABB
BAJAJHLDNG	GESHIP	JISLJALEQS	ABIRLANUVU	
PNB	TATACOMM	BANKINDIA	RCOM	BATAINDIA
TATAMOTORS	IRB	ROLTA	BHARATFORG	
STRTECH	BEL	UCOBANK	BGREENERGY	ALBK
TTML	KTKBANK	MPHASIS	UNIPHOS	ACC
SOUTHBANK	ASIANPAINT	WIPRO	CENTRALBK	LT
IDFC	PETRONET	FORTIS	SCI	COLPAL
DABUR	ABAN	SAIL	TATACOFFEE	INDUSINDBK
JPOWER	GLAXO	JSWISPAT	FEDERALBNK	BOSCHLTD
JSWENERGY	NHPC	ZEEL	IOC	MAX

Long Liquidation

ICL	AUROPHARMA	MCLEODRUSS	WELCORP
BRFL	MTNL	COREEDUTEC	SIEMENS
VIDEOIND	RANBAXY	HINDPETRO	ONGC
BPCL	GAIL		

Short Covering

JUBLFOOD	VOLTAS	NCC	TATACHEM	HINDZINC	TATAPOWER
CROMPGREAV	SESAGOA	TATAGLOBAL	AXISBANK		
SINTEX	ORIENTBANK	UNITECH	HINDALCO	IBREALST	
HDIL	ANDHRABANK	SRTRANSFIN	BANKNIFTY	IPRAJIND	
ESCORTS	ASHOKLEY	IDBI	LITL	M&M	YESBANK
ICICIBANK	TATAMTRDVR	BANKBARODA	PATELENG		
DELTAACORP	RELINFRA	POWERGRID	IDEA	CANBK	
NFTYMCAP50	TTKPRESTIGV	JAYABANK	KOTAKBANK		
SREINFRA	IOB	CNXINFRA	PTC	JPASSOCIAT	HDFCBANK
BFUTILITIE	PANTALOONR	GVKPIL	NTPC	GSPL	
GRASIM	GODREJIND	BAJAJ-AUTO	EXIDEIND	IVRCLINFRA	RELIANCE
RENUKA	RAYMOND	ORCHIDCHEM	STER	ITC	
NIFTY	ARVIND	CHAMBLFERT	APOLLOTYRE		
UNIONBANK	INDIANB	CAIRN	LICHSGFIN	HDFC	BAJAJHIND
BHARTIARTL	ADANIENT	HINDOILEXP	ALOKTEXT	RELCAPITAL	
IFCI	GMRINFRA	ADANIPORTS	AMBUJACEM		
BIOCON	ESSAROIL	RPOWER	FINANTECH	HCLTECH	JETAIRWAYS
BHUSANSTL	PFC	TATASTEEL	HEXAWARE	DISHTV	MRPL
CENTURYTEX	CESC	INDIAINFO	MRF	DCB	
RECLTD	CNXIT	RUCHISOYA	LUPIN	INFY	INDIACEM
ADANIPOWER	OPTOCIRCUIT	MCDOWELL-N	COALINDIA		
SOBHA	HEROMOTOCO	DLF	EDUCOMP	TCS	
DRREDDY	CNXPSE	ULTRACEMCO	POLARIS	JSWSTEEL	
BALRAMCHN	TECHM	ABGSHIP	SUNPHARMA		

Fresh Short

OIL	BEML	INDHOTEL	JINDALSTEL	HINDUNILVR
SUZLON	DIVISLAB	HCC	SUNTV	ONMOBILE
				APIL

Performance Corner

Daily Calls Monitor

Buy Axis Bank @ 1010/1015 sl 997 tgt 1028/1039; 1st tgt
 Buy LT @ 1193/1197 sl 1179 tgt 1211/1227; range (closing - 1204.60)
 Buy Jindalsteel @ 455/458 sl 451 tgt 467; sl
 Buy Nifty May 12 future @ 4957/4963 (spot) sl 4937 tgt 4980/4997; 2nd tgt
 Buy Ranbaxy @ 426/528 sl 521 tgt 537; range (closing - 525.20)

Buy Crude June 12 future @ 5080/5087 sl 5059 tgt 5107/5121
 Buy Copper June 12 future @ 427.00/427.50 sl 425.70 tgt 429.30/430.90
 Buy Silver July 12 future @ 54700/54800 sl 54270 tgt 55400/55700

Analyst Certificate & Disclaimer

DISCLAIMER: The document is not for public distribution and has been furnished solely for information and must not be reproduced or redistributed to others. Opinion expressed is the current opinion as of the date appearing on the material only. Further, the information in the document has been printed on the basis of publicly available information; internal data and other reliable sources believed to be true and are for general guidance only but which may not be verified independently. While every effort is made to ensure the accuracy and completeness of information contained, the company takes no guarantee and assumes no liability for any errors or omissions of the information. No one can use the information as the basis for any claim, demand or cause of action. All investment information and opinion are subject to change without notice. Recipients of this material should rely on their own investigations and take their own professional advice. Each recipient of this document should make such investigations as it deems necessary to arrive at an independent evaluation of an investment in the securities of companies referred to in this document (including the merits and risks involved), and should consult their own advisors to determine the merits and risks of such an investment. This material is for personal information and none is responsible for any loss incurred based upon it. The investments discussed or recommended in this report may not be suitable for all investors. It should not be considered to be or taken as an offer to sell or a solicitation to buy/sell any security. Price and value of the investments referred to in this material may go up or down. Past performance is not a guide for future performance. Certain transactions - futures, options and other derivatives as well as non-investment grade securities - involve substantial risks and are not suitable for all investors. Reports based on technical analysis centers on studying charts of a stock's price movement and trading volume, as opposed to focusing on a company's fundamentals and as such, may not match with a report on company's fundamentals. Analyst who has issued this report, may, on the date of this report, and from time to time, have long or short positions in, and buy or sell the securities of the companies mentioned herein or engage in any other transaction involving such securities and earn brokerage or compensation or act as advisor or have other potential conflict of interest with respect to company/ies mentioned herein or inconsistent with any recommendation and related information and opinions.